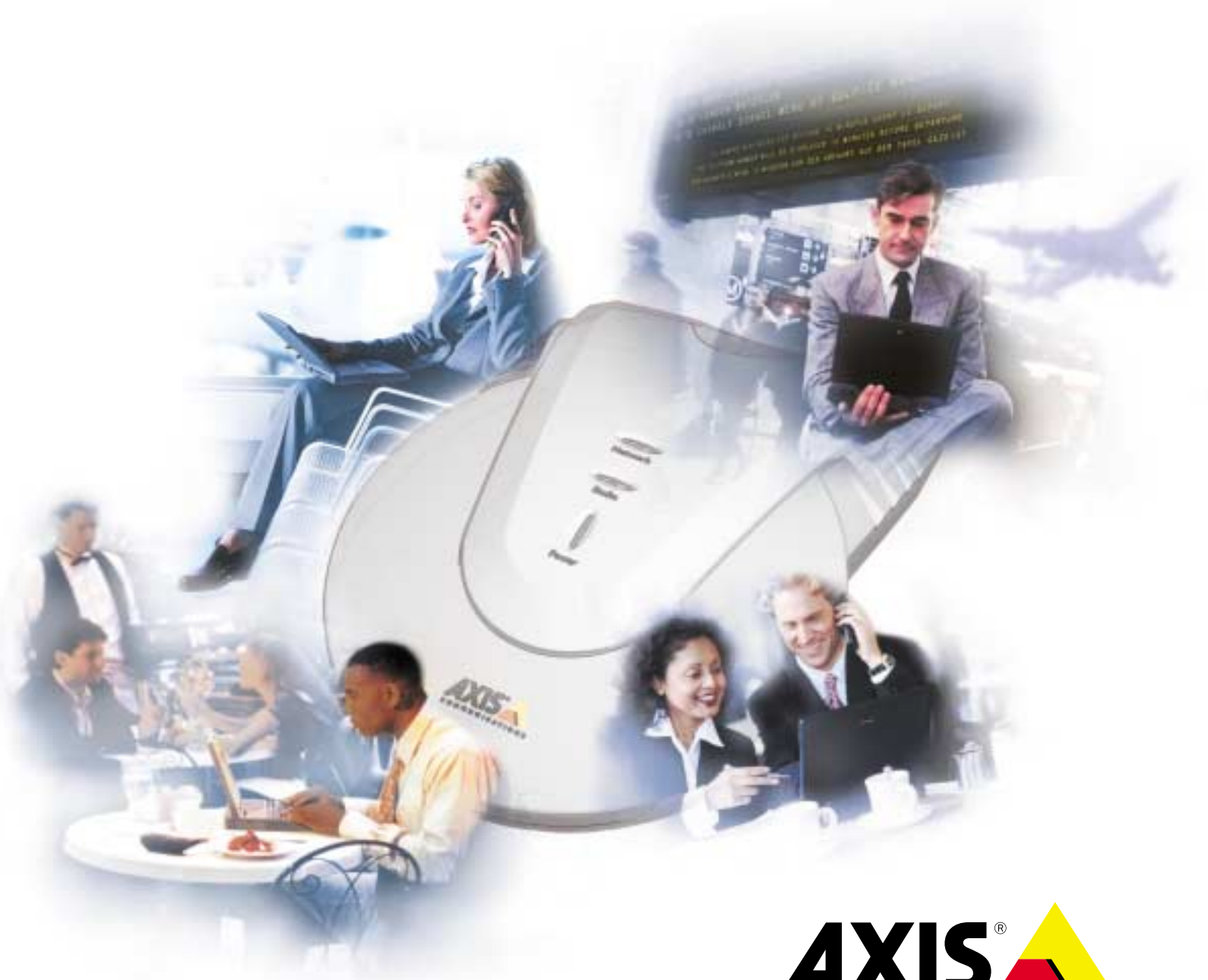




Mobile Access by Axis

Wireless Access Points



AXIS[®]
COMMUNICATIONS

Mobile Internet: Unleashing the Power of *Bluetooth*

There's a revolution taking shape today that's fundamentally changing the way people will work, communicate and access information. The Internet is going wireless, with an emerging world of new devices that bring mobile freedom to everyone.

Axis Communications is extending the value and function of these mobile devices with innovations that allow them to take advantage of local and remote network resources. Users can synchronize PDAs with up to date contact information, access their e-mail and the Internet from their laptops, and retrieve localized information – all without cables and expensive carrier charges.

The *Bluetooth* Access Point from Axis is part of a family of network access solutions that create local mobile networks of high-speed wireless connectivity areas. These areas provide a wireless communications link to local networks and the Internet for mobile devices equipped with *Bluetooth* wireless technology, an industry supported technology that provides a low-cost means for supporting short-range wireless communications between portable devices. Axis provides solutions that scale from network access devices to larger, more advanced systems to meet the range of needs for new mobile networks and services.

By bringing together the benefits of the wired and wireless worlds, Axis is enabling a new class of services that provide mobile flexibility while leveraging existing investments in network infrastructure. With the introduction of the *Bluetooth* Access Point, Axis has unleashed the full power of *Bluetooth*.

"Over 1.4 billion devices are expected to be shipped with *Bluetooth* wireless technology by 2005 (Cahners In-Stat)."

Bluetooth Access Point: Going Beyond Cables

The *Bluetooth* Access Point belongs to a family of products from Axis Communications, a leader in network connectivity. It is based on Axis' ThinServer Technology, which enables devices to be connected to any computer network seamlessly and cost-effectively. The cornerstone of this technology is the AXIS ETRAX system-on-a-chip, which is optimized for Internet applications and features embedded Linux.

Instant, Easy Connectivity

The *Bluetooth* Access Point allows mobile users to connect to networks without delay when they are located in a defined Local Mobile Network* area. It recognizes when a *Bluetooth* device has entered its area and establishes a secure wireless connection with the local network. All this happens in the background without the user having to worry about configurations or cables.

Low-Cost, High-Speed Network Access

The *Bluetooth* wireless technology operates at radio frequencies that are plentiful and free, resulting in the ability to establish high-speed communications using the Internet. Local Mobile Networks take these advantages beyond peer-to-peer links by enabling device-to-network connectivity.

A Solution for Many Mobile Devices

The *Bluetooth* Access Point supports a wide range of devices equipped with *Bluetooth* wireless technology, including PDAs, mobile phones, laptop computers, web-pads and emerging application specific devices.

A Secure System, Easy to Install and Manage

The *Bluetooth* Access Point incorporates built-in intelligence for providing security, quick installation and configuration management. These devices are easy to manage from anywhere via a standard web browser interface.

*A Local Mobile Network is a wireless local network that, within a designated area, enables users with mobile devices to access wired network services.



Local Mobile Networks: Enabling a New Class of Services

At the Office

You arrive at your company's office minutes before you need to go to the conference room to meet with a potential client. Because the *Bluetooth* Access Point gives you immediate wireless access to the LAN, you quickly download an updated presentation to your laptop. The prospect is delayed, so while you wait in the conference room, you check e-mail, review today's related market news on the web, and edit a proposal draft. The meeting with the prospect yields success and the two of you start collaborating on finalizing the proposal. She wirelessly accesses her secure e-mail server and distributes the document to her key contacts for feedback.

In the Hotel

As you check into your hotel, you avoid the long lines at the front desk by confirming your reservation on your PDA. The hotel transmits a code to your PDA that serves as your room "key" that unlocks your door as you approach. During the meeting, you wirelessly access services in the business center. After closing the deal, you change your flight arrangements as you lounge poolside. To check out, you review room charges on your PDA, confirm them, and walk outside to a waiting taxi, which was ordered during your remote checkout.

In the Store

You walk into a large furniture store and your PDA starts communication with one of the store's *Bluetooth* Access Points, providing information about the store layout and special sales promotions. As you walk down the aisle, your PDA displays useful information about products as you approach them. You locate the item you came for—a couch—and find out immediately if the desired style, color and fabric is in stock and delivery options. On your prompting, the store suggests accessories with promotional discounts. You make the purchase on the spot, scheduling delivery and avoiding the wait for a cashier. You pick up the vase and pillows you purchased, which are waiting for you as you leave the store.

At the Airport

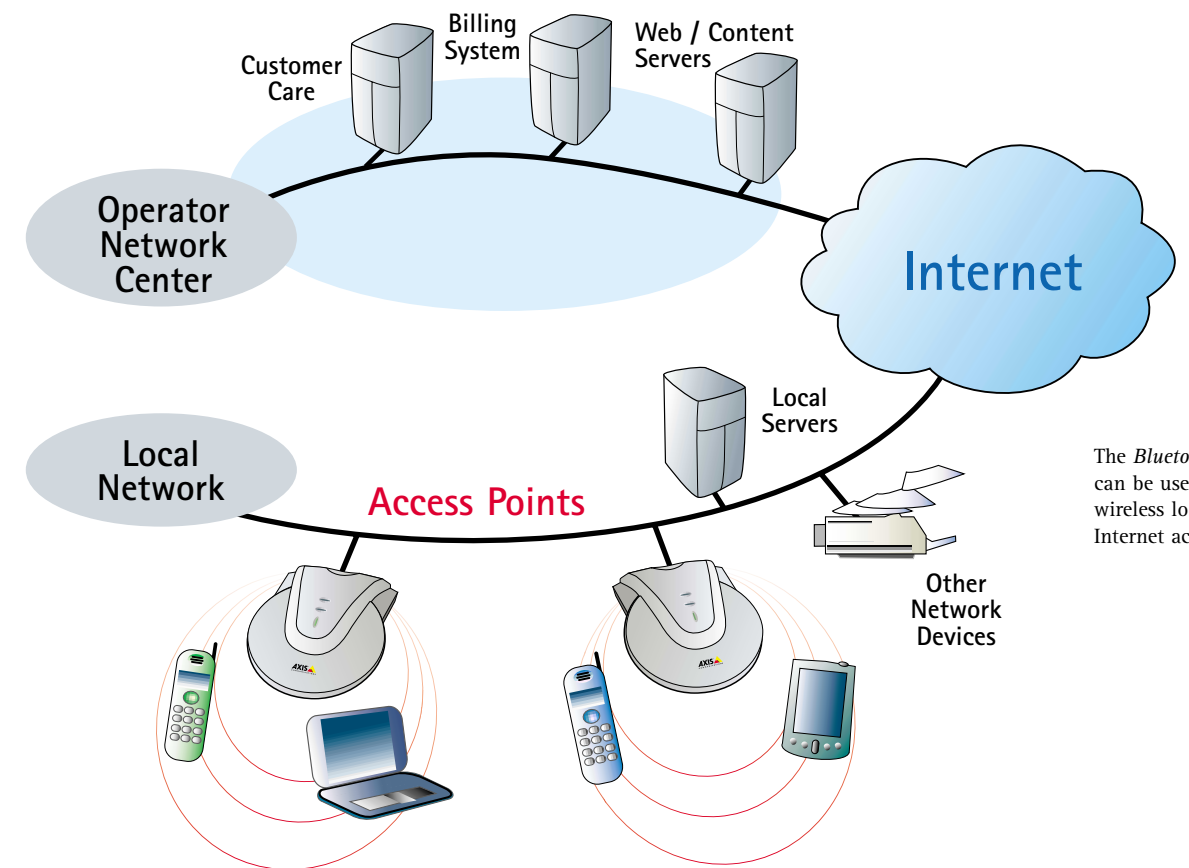
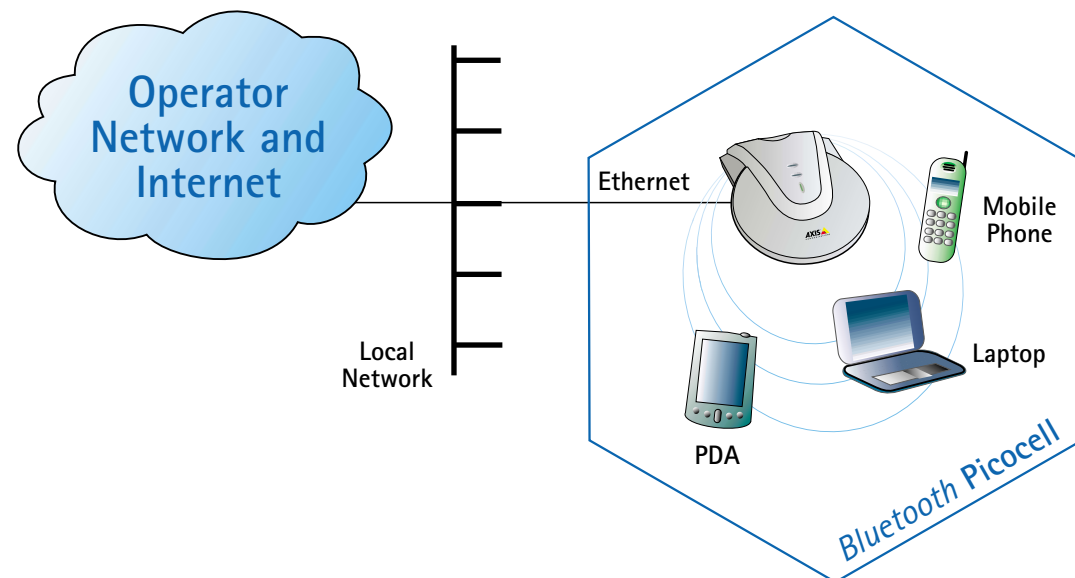
As you approach the baggage check-in counter outside the terminal, your mobile device begins receiving flight information from one of the airline's *Bluetooth* Access Points. After checking in, your device displays the departure status, gate information, seat assignments and claim check numbers for your bags. Upon entering the airline's business lounge, you are given instant high-speed wireless access to the local network, so you check e-mail, browse news updates from your favorite Web site and make dinner reservations at a restaurant in your destination city. You continue working without interruption as you switch to a more comfortable chair across the room. As you sit down, you receive an alert that your flight has been delayed 30 minutes, as well as confirmation of your requested upgrade. You reply with an acknowledgment and make your First Class meal and wine selection.



How the *Bluetooth* Access Point works?

When users enter into the defined range or "cell" of a *Bluetooth* Access Point, their enabled mobile devices will not only be able to communicate with each other but also link directly to the local network and the Internet. This approach provides higher-speed access and cost advantages over using mobile phones to access carrier

services. The *Bluetooth* Access Point will automatically recognize each device's profile, authenticate, and provide the authorized level of access to network resources. When users roam outside this defined cell area, their mobile carrier service automatically picks up coverage and continues providing a level of service.



The *Bluetooth* Access Point can be used today to provide wireless local network and Internet access.

A Multitude of Opportunities

The Local Mobile Network concept signals a new market opportunity to provide value-added services for mobile users in all settings that can be deployed and maintained locally. Unlicensed radio spectrum, combined with seamless connectivity to the Internet and wired networks, creates exciting new opportunities for service providers, content providers and users alike.

Axis is dedicated to deliver building blocks to help realize these new and exciting opportunities. The AXIS 9010 *Bluetooth* Access Point provides the "missing link" between devices using *Bluetooth* wireless technology, wired networks and the Internet. These devices now have a simple and high-speed means for accessing any network based on the Internet Protocol (IP). The *Bluetooth* Access

Point from Axis also provides a firm, flexible foundation for access control, security and other management and administration functions.

The AXIS 9010 *Bluetooth* Access Point can be located in virtually any environment such as offices, conference centers, airports, hotels, shopping malls, entertainment complexes and tourist areas to provide local area wireless coverage. Several AXIS 9010 *Bluetooth* Access Points can be used to provide wide radio coverage over a large area.

The *Bluetooth* Access Point Product Family – Technical Information

- Connects to Ethernet/Fast Ethernet and systems running TCP/IP
- Point to multipoint functionality
- Class 1 radio configuration
- Adjustable radio output power
- Embedded Linux operating system
- Support for Dynamic Host Configuration Protocol (DHCP) for server and client IP address management
- Built-in web server with web interface for configuration, remote management and support information
- Support for Radius authentication and accounting protocol
- Flash memory for easy software upgrades using FTP

About Axis

The Axis Communications Group, with the parent company Axis AB, is a leader in network connectivity and emerging wireless Internet-based services. The company is at the forefront of developing network appliance solutions that enable people and organizations to get easy and immediate access to devices and services. Axis is one of the global leaders in several key thin server and network device markets, such as printer, storage and video connectivity, and is doing pioneering work in the rapidly expanding markets of wireless and mobile communications.

Founded in 1984, Axis employs more than 350 people worldwide. Axis is headquartered in Lund, Sweden and has a total of 20 offices throughout Europe, North America and Asia. Axis is listed on the Stockholm Stock Exchange.

Axis Communications
Office Locations

CORPORATE HEADQUARTERS
SWEDEN
Phone: +46 46 272 18 00

AUSTRALIA:
Phone: +61 2 9957 6700

BENELUX:
Phone: +31 10 444 34 34

CHINA:
Phone: +86 21 6431 1690

FRANCE:
Phone: +33 1 49 69 15 50

GERMANY:
Phone: +49 811 555 080

HONG KONG:
Phone: +852 2836 0813

ITALY:
Phone: +39 011 841 321

JAPAN:
Phone: +81 3 5531 8041

KOREA:
Phone: +82 2 780 9636

SINGAPORE:
Phone: +65 836 2777

SPAIN:
Phone: +34 91 803 46 43

TAIWAN:
Phone: +886 2 2546 9668

UK:
Phone: +44 870 162 0047

USA, Boston:
Phone: +1 978 614 20 00

USA, Miami:
Phone: +1 305 629 3524

www.axis.com

©2001 Axis Communications. Axis is a registered trademark, and ThinServer is a trademark of Axis Communications AB. *BLUETOOTH* is a trademark owned by the Bluetooth SIG, Inc. and licensed to Axis Communications AB. All other company names and products are trademarks or registered trademarks of their respective companies. We reserve the right to introduce modifications without notice.

